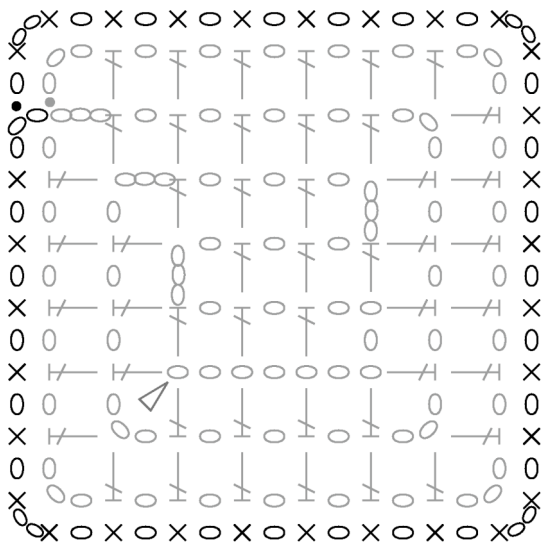


# Finishing a Double Granny square

*Step 1: build contrast layer up to size of background layer*



This figure shows *the contrast layer only*.

Work on the right side, but behind the background layer.


Using *contrast* yarn

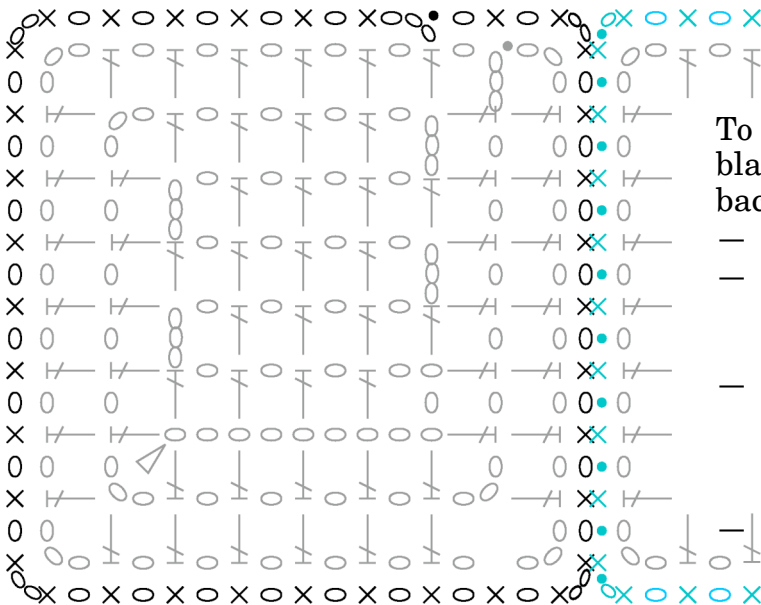
- start with 3 ch (counting for 1 dc, 1 ch);
- work 1 dc, 1 ch *behind* the background border into the contrast treble-tops;
- at corners work 1 dc into the central corner chain, 2 ch, then 1 dc into the same corner chain, 1 ch and continue along next side;
- on completing round, work ss into second ch from start

Alternatively, you can fasten off at the end of row 8 and start again in the middle of a side!



*Step 2: bind contrast and background layers – (and optionally join two or more squares)*

 Note: if you envisage joining together a number of squares, postpone this step until all are complete, as you will bind them and join them in a single operation.



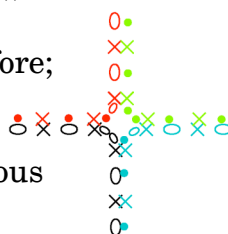
You now have background on top (*shown*) and built-up contrast behind.


To bind your first square (work shown in black), start in middle of a side with background or other colour

- start with 3 ch (counting for 1dc, 1ch);
- work 1 dc, 1 ch through tops of background trebles *on top* and through the chain-space of the built-up row *behind*;
- at corners work 1dc into the central corner chain, 2 ch, then 1dc into the same corner chain, 1 ch and continue along next side;
- finish with ss into 2nd ch from start

To join a second square (work shown in blue/red/green)

- start on an outside edge as before;
- where edges join, alternate dc through two layers of current square with ss into ch of previous square;
- finish as before



 Count your stitches as you complete each side – pinch the two corners and you should have 7 dcs in between. Otherwise you'll find it difficult to join squares!